

Updating your shell password on turing.acm.org

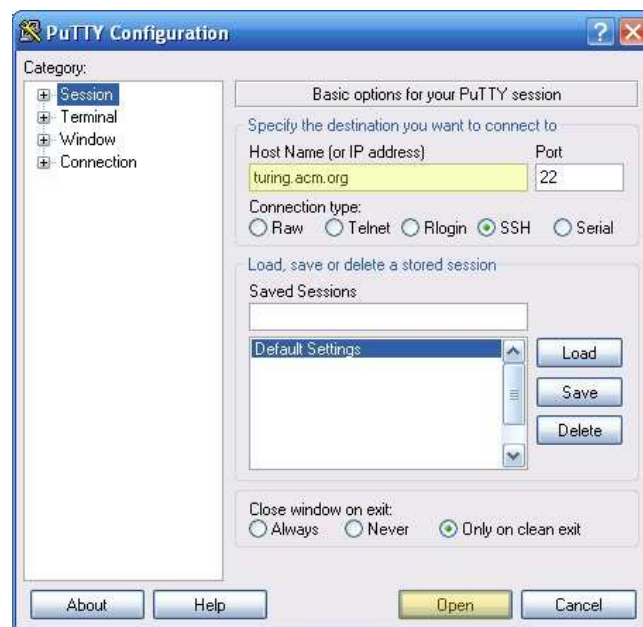
Pre-requisites:

- A valid shell account in turing.acm.org
- Compliant SSH Client

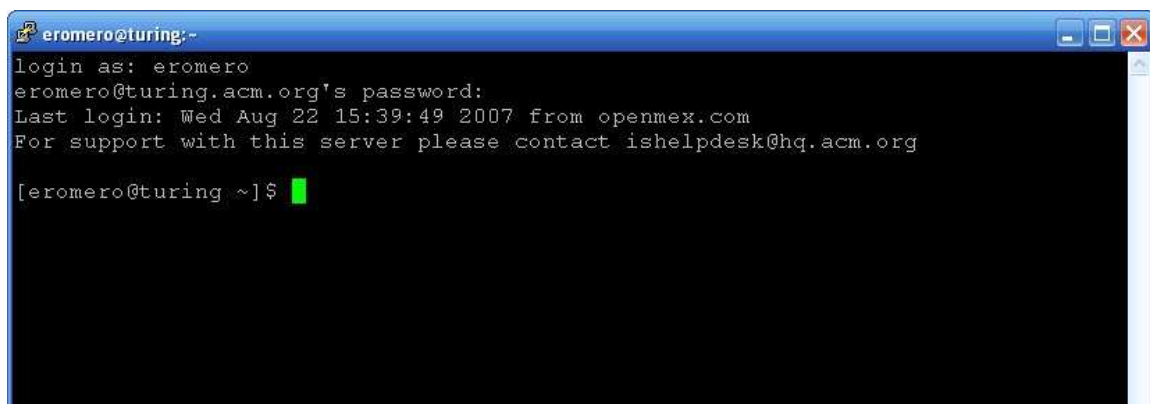
Instructions

Windows Users

1. Open your favorite SSH Client.



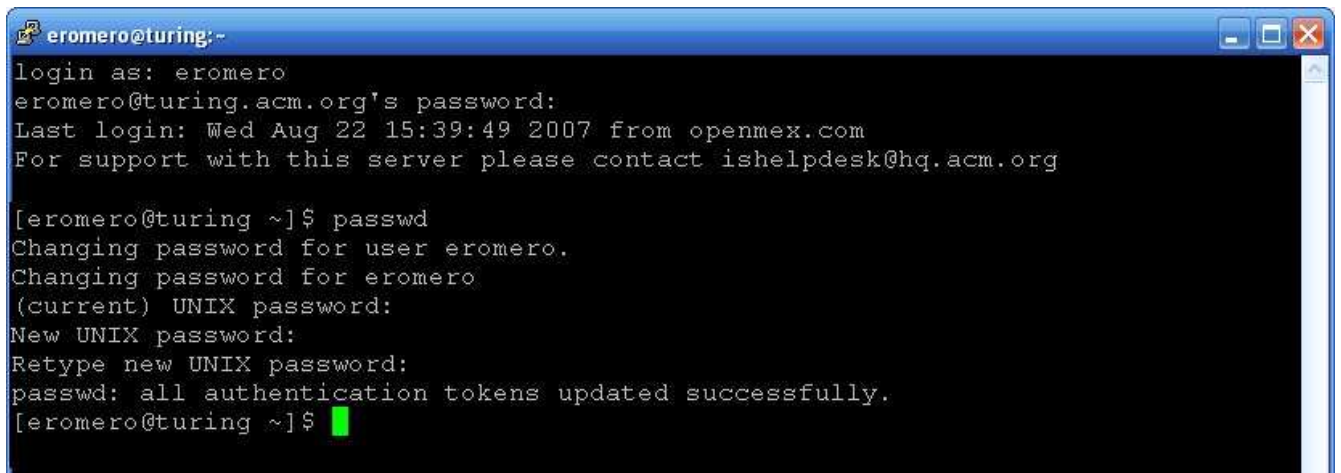
2. Connect to **turing.acm.org** as you normally, using your username and your current password do.



You should see something like the image above.

3. Now, to change your password type **passwd**.

You will be prompted for your current password (**current Unix password**), then asked for a new password (**new Unix password**) and finally to repeat your password to avoid mistakes (**Retype new Unix password**)

A terminal window titled 'eromero@turing:~' with a black background and white text. The text shows a login process for 'eromero' at 'turing.acm.org'. After the login, the user enters 'passwd' at the prompt. The terminal displays several messages: 'Changing password for user eromero.', 'Changing password for eromero', '(current) UNIX password:', 'New UNIX password:', and 'Retype new UNIX password:'. The final message is 'passwd: all authentication tokens updated successfully.' followed by a green cursor.

```
eromero@turing:~  
login as: eromero  
eromero@turing.acm.org's password:  
Last login: Wed Aug 22 15:39:49 2007 from openmex.com  
For support with this server please contact ishelpdesk@hq.acm.org  
  
[eromero@turing ~]$ passwd  
Changing password for user eromero.  
Changing password for eromero  
(current) UNIX password:  
New UNIX password:  
Retype new UNIX password:  
passwd: all authentication tokens updated successfully.  
[eromero@turing ~]$ █
```

Note: For improved security the passwords you type are not displayed. Just type your password and hit *<enter>*.

4. Type **exit** to close the connection. Next time you login you will be prompted for your new password.

Linux/Mac Users

1. Open a new Terminal



2. Run `ssh <username>@turing.acm.org`, where `<username>` is the name of your SSH account. If your username is **eromero** you would run:

```
ssh eromero@turing.acm.org
```

```
[eromero@baueralonso ~]$ ssh eromero@turing.acm.org
eromero@turing.acm.org's password:
Last login: Wed Aug 22 14:48:39 2007 from 189.164.115.22
For support with this server please contact ishelpdesk@hq.acm.org

[eromero@turing ~]$ █
```

You will be prompted for your password, type it in. After a successful login you should see something like the image above.

3. Now, to change your password type `passwd`.

You will be prompted for your current password (**current Unix password**), then asked for a new password (**new Unix password**) and finally to repeat your password to avoid mistakes (**Retype new Unix password**)

```
[eromero@baueralonso ~]$ ssh eromero@turing.acm.org
eromero@turing.acm.org's password:
Last login: Wed Aug 22 15:39:21 2007 from openmex.com
For support with this server please contact ishelpdesk@hq.acm.org

[eromero@turing ~]$ passwd
Changing password for user eromero.
Changing password for eromero
(current) UNIX password:
New UNIX password:
Retype new UNIX password:
passwd: all authentication tokens updated successfully.
[eromero@turing ~]$ █
```

Note: For improved security the passwords you type are not displayed. Just type your password and hit `<enter>`.

4. Type `exit` to close the connection. Next time you login you will be prompted for your new password.

For more information please contact: **ishelpdesk@hq.acm.org**